

# Platform turned upside down? No problem.

## IRIDIUM BASED SURFACE BEACON

The Rover is an independently powered, self-contained satellite transceiver designed to work in the most rugged ocean environments. Things don't always follow plan, so the Rover features independent dual GPS and Iridium patch antennas so that in the event the surface expression is flipped over, the unit will continue to record its position and transmit it back to you. Packaged in a ruggedized, UV protected, marine grade housing the Rover makes use of the low power, real time Iridium satellite constellation and GPS to reliably transmit the buoy's position automatically or on demand at any time.

### Key Features

- **Two antennas at the top and bottom allow the unit to collect and transmit data even if it is capsized**
- **Surface only**
- **Acetal enclosure with user replaceable batteries**
- **Up to 2 years deployment**
- **Utilizes the new 9603 modem**
- **Can operate on the Xeos Online console**
- **Command & Control App**

The Rover is designed to meet or exceed your operational requirements for a surface beacon.

All Xeos products are fully backed by a comprehensive warranty and excellent support. To arrange a demo or to learn more about our products please contact us at the numbers below.



## **Xeos** *Technologies Inc* **Data Telemetry Specialists**

Xeos Technologies Inc. Tel: 902.444.7650  
36 Topple Drive Fax: 902.444.7651  
Dartmouth, NS, Canada sales@xeostech.com  
B3B 1L6 www.xeostech.com



# ROVER

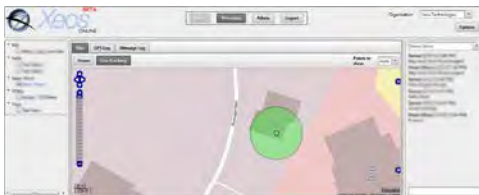


# ROVER

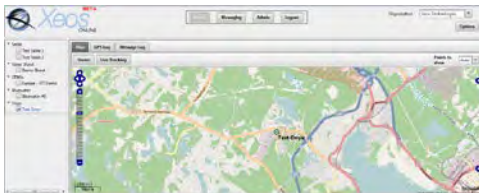
## TECHNICAL SPECIFICATIONS\*

### Yeos Online

Xeos Online is a web-hosted application that streamlines and facilitates the management of all your Iridium devices. A single source for device management, team setup, notification and alarm management, data collection, analysis, and billing, Xeos Online puts it all at your fingertips. Mobile ready and cross-browser compatible, be in control from anywhere.



ID	Message ID	Device ID	Latitude	Longitude	Altitude	Speed	Heading	Temperature	Pressure
1766	1766	1000	44.111111	-77.000000	100	0.0	0.0	15.0	1013.25
1767	1767	1000	44.111111	-77.000000	100	0.0	0.0	15.0	1013.25
1768	1768	1000	44.111111	-77.000000	100	0.0	0.0	15.0	1013.25
1769	1769	1000	44.111111	-77.000000	100	0.0	0.0	15.0	1013.25
1770	1770	1000	44.111111	-77.000000	100	0.0	0.0	15.0	1013.25
1771	1771	1000	44.111111	-77.000000	100	0.0	0.0	15.0	1013.25
1772	1772	1000	44.111111	-77.000000	100	0.0	0.0	15.0	1013.25
1773	1773	1000	44.111111	-77.000000	100	0.0	0.0	15.0	1013.25
1774	1774	1000	44.111111	-77.000000	100	0.0	0.0	15.0	1013.25
1775	1775	1000	44.111111	-77.000000	100	0.0	0.0	15.0	1013.25
1776	1776	1000	44.111111	-77.000000	100	0.0	0.0	15.0	1013.25
1777	1777	1000	44.111111	-77.000000	100	0.0	0.0	15.0	1013.25
1778	1778	1000	44.111111	-77.000000	100	0.0	0.0	15.0	1013.25
1779	1779	1000	44.111111	-77.000000	100	0.0	0.0	15.0	1013.25
1780	1780	1000	44.111111	-77.000000	100	0.0	0.0	15.0	1013.25



### Who are we?

Xeos is a leading technology firm created by visionaries with a passion for excellence. Xeos prides itself on a pioneer mentality, always striving to create superior technological solutions to tracking and monitoring problems. For more information on our COTS and custom developments please contact us at the numbers below.

Xeos Technologies Inc.  
36 Topple Drive  
Dartmouth, NS, Canada  
B3B 1L6

Tel: 902.444.7650  
Fax: 902.444.7651  
sales@xeostech.com  
www.xeostech.com

### Functionality

*Base Function:*

2-way Iridium Communication

*Serial Programmable Functions:*

GPS location & transmission of data

### Electrical

*Supply Voltage:*

18 AA Batteries (Lithium or Alkaline)

*Deployment Length:*

Approximately 2 years at 3 hour intervals

*Sleep Current:*

<40µA

*Transmit Current:*

70mA

### Communication

*Iridium:*

9603 Modem

*Antenna:*

Dual RHCP Iridium patch antennas  
& independent dual GPS antennas

*Local:*

Bluetooth Low Energy (BTLE)

### Mechanical

*Dimensions:*

214.12 mm L x 63.5 mm Diameter  
(8.43" L x 2.5" Diameter)

*Weight:*

*With Lithium Batteries*

198 g - in water, 875 g - out of water

*With Alkaline Batteries*

378 g - in water, 1055 g - out of water

*Depth Rating:*

100 m for short deployments

### Environmental

*Operating Temperature:*

-40° C to +60° C

### Compatible with:

*Xeos Online Console*

Web-based control & tracking

*BTLE Android App*

Diagnostic and Commands

\* Technical Specifications subject to change without notice.



**Xeos Technologies Inc**  
**Data Telemetry Specialists**

ROVER | December 2017

